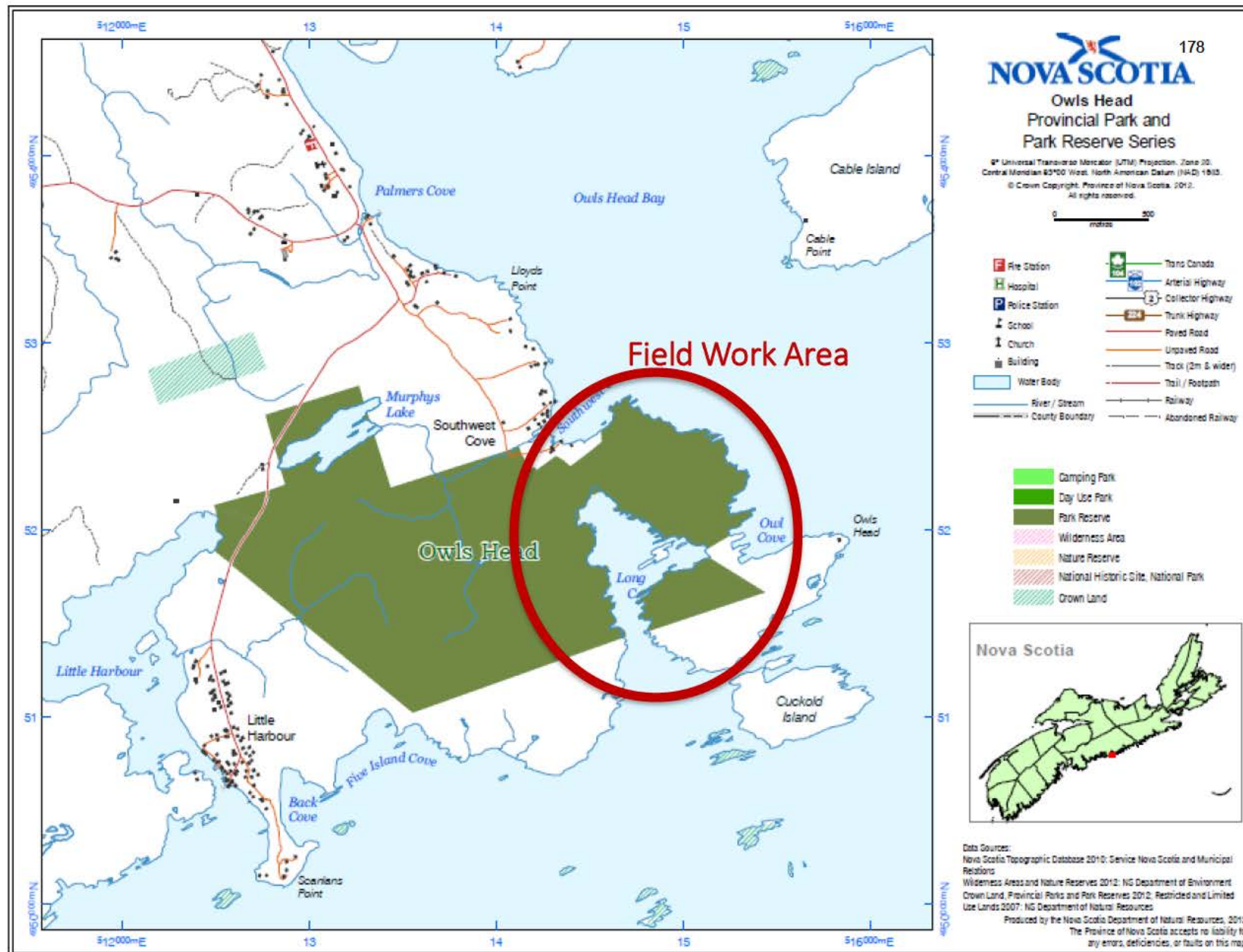


# Owls Head Park Reserve

Field Visit – October 24, 2017



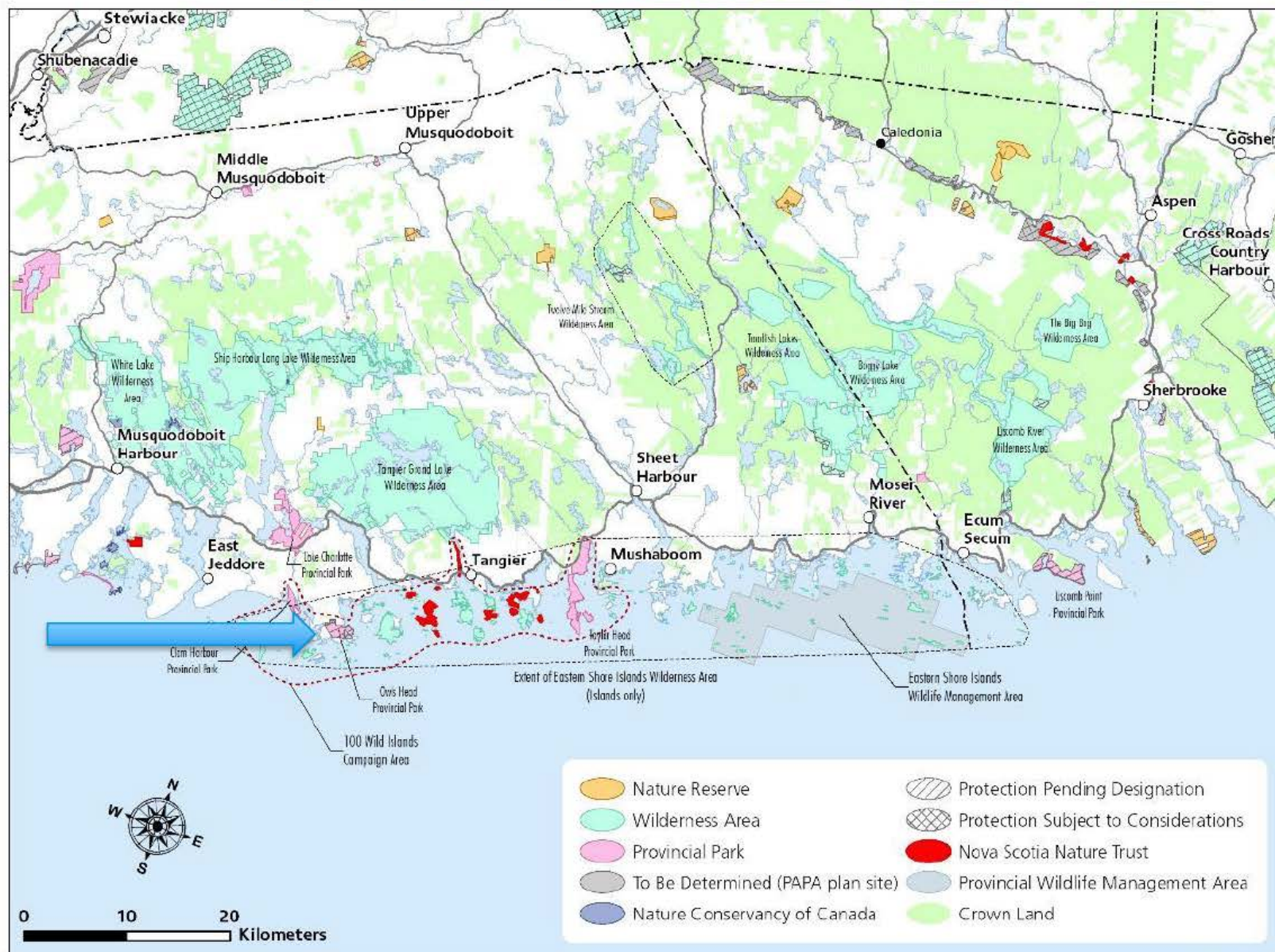
Intended for Public Use

# Observations

- Park-related values
  - Coastal access
  - Scenic recreation / tourism opportunities
  - Compelling natural/geological landscape
  - “Gateway” connection to wild islands (WITAP) area
- Development considerations
  - Long history as “park” site
  - Rugged terrain with thin soils and prominent quartzite ridges – challenge for transforming the landscape
  - Local and regional community interests unknown



# WITAP Project Area



Intended for Public Use









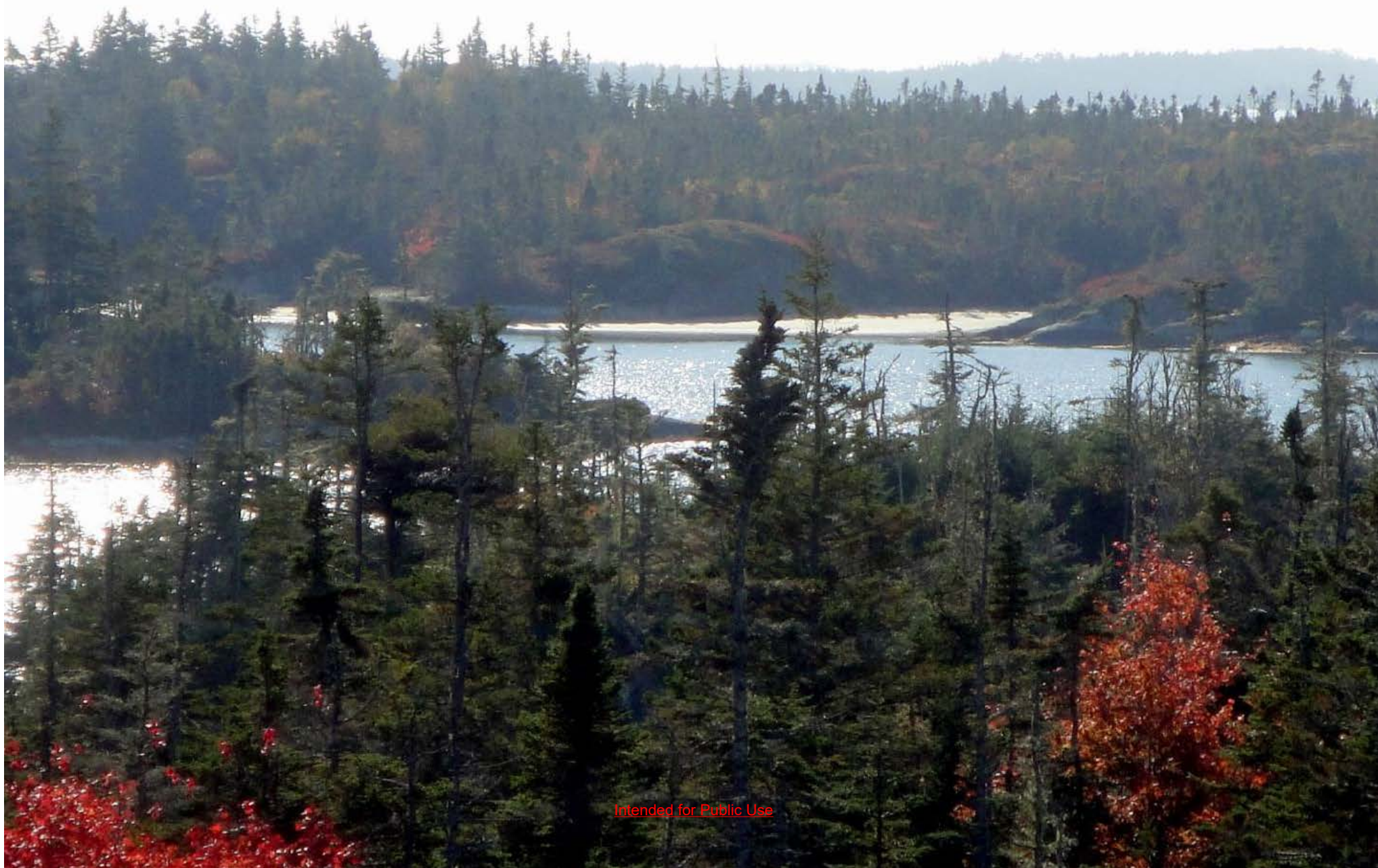
20(1)

Intended for Public Use









Intended for Public Use













Intended for Public Use

















Intended for Public Use



